

**DAIKIN**



# OPERATION MANUAL

---

## **VRV** SYSTEM Inverter Air Conditioners

---

### MODELS

#### Wall-mounted type

**FXAQ07MVJU**

**FXAQ09MVJU**

**FXAQ12MVJU**

**FXAQ18MVJU**

**FXAQ24MVJU**

Carefully read this operation manual before using the air conditioner. It will tell you how to use the unit properly and help you if any trouble occurs. This manual explains about the indoor unit only. Use it along with the operation manual for the outdoor unit. After reading the manual, file it away for future reference.

## SAFETY CONSIDERATIONS

Please read these "SAFETY CONSIDERATIONS" carefully before installing air conditioning equipment and be sure to install it correctly. After completing the installation, make sure that the unit operates properly during the start-up operation. Please instruct the customer on how to operate the unit and keep it maintained.

Also, inform customers that they should store this operation manual along with the installation manual for future reference. This air conditioner comes under the term "appliances not accessible to the general public".

Meaning of danger, warning, caution and note symbols.

**⚠ DANGER** ..... Indicates an imminently hazardous situation which, if not avoided, will result in death or serious injury.

**⚠ WARNING** ..... Indicates a potentially hazardous situation which, if not avoided, could result in death or serious injury.

**⚠ CAUTION** ..... Indicates a potentially hazardous situation which, if not avoided, may result in minor or moderate injury. It may also be sued to alert against unsafe practices.

**⚠ NOTE** ..... Indicates situation that may result in equipment or property-damage-only accidents.

**Keep these warning sheets handy so that you can refer to them if needed.**

Also, if this equipment is transferred to a new user, make sure to hand over this operation manual to the new user.

### **⚠ DANGER**

- **Do not install the unit in an area where flammable materials are present due to risk of explosion resulting in serious injury or death.**
- **Any abnormalities in the operation of the air conditioner such as smoke or fire could result in severe injury or death.**  
Turn off the power and contact your dealer immediately for instructions.
- **Refrigerant gas may produce toxic gas if it comes in contact with fire such as from a fan, heater, stove or cooking device. Exposure to this gas could cause severe injury or death.**
- **For refrigerant leakage, consult your dealer.**  
Refrigerant gas is heavier than air and replaces oxygen. A massive leak could lead to oxygen depletion, especially in basements, and an asphyxiation hazard could occur leading to serious injury or death.
- **If equipment utilizing a burner is used in the same room as the air conditioner, there is the danger of oxygen deficiency which could lead to an asphyxiation hazard resulting in serious injury or death.**  
Be sure to ventilate the room sufficiently to avoid this hazard.

- **Safely dispose of the packing materials.**  
Packing materials, such as nails and other metal or wooden parts, may cause stabs or other injuries.  
Tear apart and throw away plastic packaging bags so that children will not play with them. Children playing with plastic bags face the danger of death by suffocation.

### **⚠ WARNING**

- **It is not good for your health to expose your body to the air flow for a long time.**
- **Ask your dealer for installation of the air conditioner.**  
Incomplete installation performed by yourself may result in a water leakage, electric shock, and fire.
- **Ask your dealer for improvement, repair, and maintenance.**  
Incomplete improvement, repair, and maintenance may result in a water leakage, electric shock, and fire.
- **Improper installation or attachment of equipment or accessories could result in electric shock, short-circuit, leaks, fire or other damage to the equipment. Be sure only to use accessories made by Daikin which are specifically designed for use with the equipment and have them installed by a professional.**
- **Ask your dealer to move and reinstall the air conditioner.**  
Incomplete installation may result in a water leakage, electric shock, and fire.
- **Never let the indoor unit or the remote controller get wet.**  
It may cause an electric shock or a fire.
- **Never use flammable spray such as hair spray, lacquer or paint near the unit.**  
It may cause a fire.
- **Never replace a fuse with that of wrong ampere ratings or other wires when a fuse blows out.**  
Use of wire or copper wire may cause the unit to break down or cause a fire.
- **Never remove the fan guard of the unit.**  
A fan rotating at high speed without the fan guard is very dangerous.
- **Never inspect or service the unit by yourself.**  
Ask an authorized service person to perform this work.
- **Cut off all electric waves before maintenance.**
- **To avoid the risk of serious electrical shock, never sprinkle or spill water or liquids on the unit.**
- **Operating the air conditioner with wet hands could result in a shock hazard.**
- **Do not allow children to play on or around the unit as they could be injured.**
- **Check the unit stand for damage on a continuous basis.**  
If left in a damaged condition the unit may fall and cause injury.
- **Placing a flower vase or other containers with water or other liquids on the unit could result in a shock hazard or fire if a spill occurs.**
- **The heat exchanger fins are sharp enough to cut.**  
To avoid injury wear gloves or cover the fins while working around them.

- **Do not put a finger or other objects into the air inlet or air outlet.**  
The fan is rotating at high speed and will cause injury.
  - **Do not touch the air outlet or the horizontal flaps while the swing flap is in operation as fingers may get caught and injured.**
  - **Be sure to install an earth leakage breaker.**  
Failure to install an earth leakage breaker may result in electric shocks, or fire.
  - **Never touch the internal parts of the controller.**  
Do not remove the front panel because some parts inside are dangerous to touch. In addition, some parts may be damaged. For checking and adjusting internal parts, contact your dealer.
- 

### CAUTION

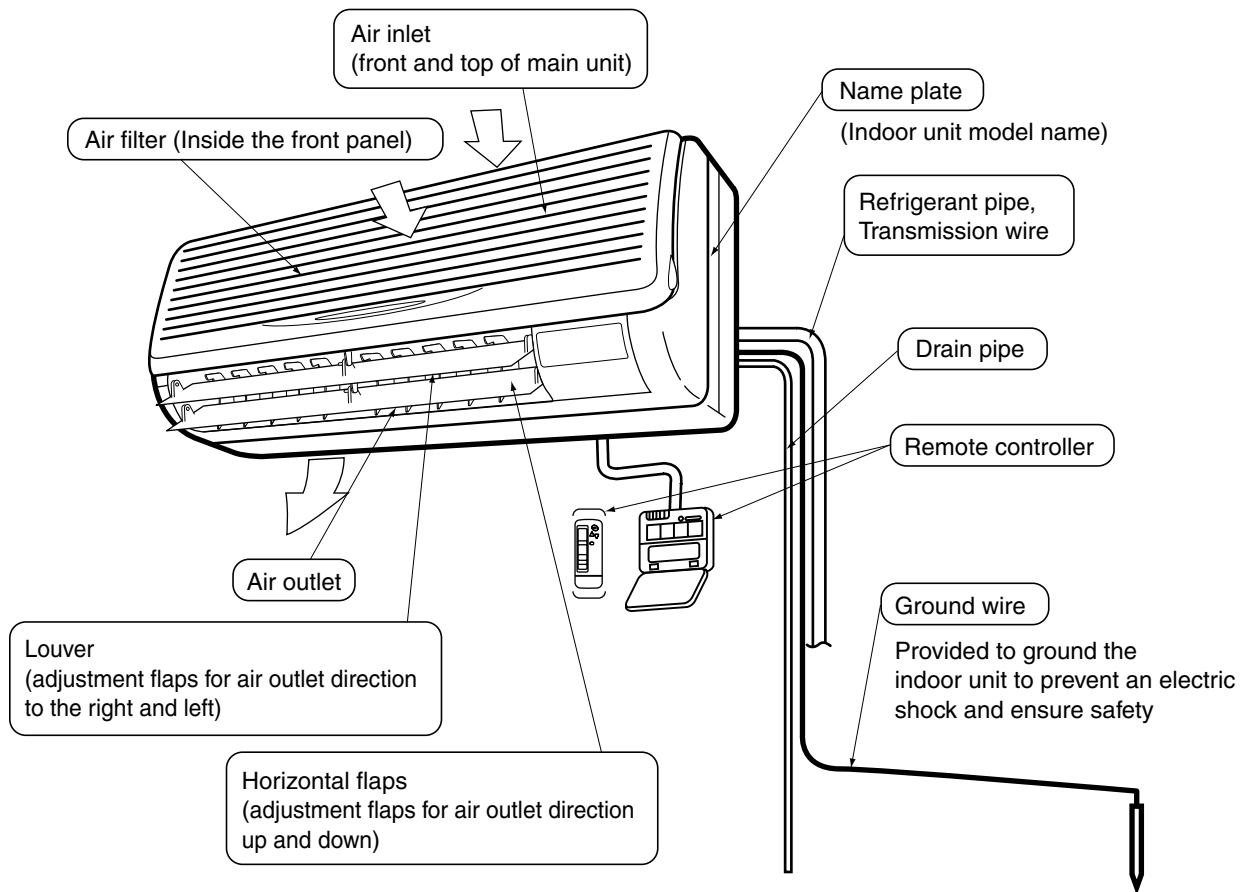
---

- **Do not use the air conditioner for other purposes.**  
In order to avoid any quality deterioration, do not use the unit for cooling precision instruments, food, plants, animals or works of art.
  - **Do not place items under the indoor unit which may be damaged by water.**  
Condensation may form if the humidity is above 80% or if the drain outlet gets blocked.
  - **Avoid placing the controller in a spot splashed with water.**  
Water coming inside the unit may cause an electric leak or may damage the internal electronic parts.
  - **Do not operate the air conditioner when using a room fumigation - type insecticide.**  
Failure to observe could cause the chemicals to become deposited in the unit, which could endanger the health of those who are hypersensitive to chemicals.
  - **Do not turn off the power immediately after stopping operation.**  
Always wait at least five minutes before turning off the power. Otherwise, water leakage and trouble may occur.
  - **The appliance is not intended for use by young children or infirm persons without supervision.**
  - **The remote controller should be installed in such way that children cannot play with it.**
  - **Consult with installation contractor for cleaning the inside of the air conditioner.**  
Wrong cleaning may make the plastics parts broken or cause failure of water leakage or electric shock.
  - **Do not touch the air inlet or aluminium fin of the air conditioner.**  
Otherwise, injury may be caused.
  - **Do not place objects in direct proximity of the outdoor unit and do not let leaves and other debris accumulate around the unit.**  
Leaves are a hotbed for small animals which can enter the unit. Once in the unit, such animals can cause malfunctions, smoke or fire when making contact with electrical parts.
- 

### NOTE

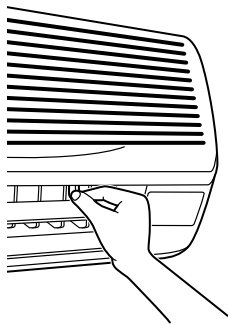
---

- **Never press the button of the remote controller with a hard, pointed object.**  
The remote controller may be damaged.
  - **Never pull or twist the electric wire of the remote controller.**  
It may cause the unit to malfunction.
  - **Do not place appliances which produce open fire in places exposed to the air flow from the unit or under the indoor unit. It may cause incomplete combustion or deformation of the unit due to the heat.**
  - **Arrange the drain hose to ensure smooth drainage. Incomplete drainage may cause wetting of the building, furniture etc.**
  - **Do not place the controller exposed to direct sunlight.**  
The LCD display may get discolored, failing to display the data.
  - **Do not wipe the controller operation panel with benzene, thinner, chemical dustcloth, etc.**  
The panel may get discolored or the coating peeled off. If it is heavily dirty, soak a cloth in water-diluted neutral detergent, squeeze it well and wipe the panel clean. And wipe it with another dry cloth.
  - **Dismantling of the unit, treatment of the refrigerant, oil and eventual other parts, should be done in accordance with the relevant local and national regulations.**
  - **Do not dry the filter by exposing it to direct sunlight or warming it using fire, etc. Doing so can result in the deformation of the filter.**
-



## HOW TO ADJUST THE HORIZONTAL AIR DIRECTION ANGLE

Hold the tabs on edge louvers (horizontal air outlet direction adjustment flaps) down slightly and adjust left and right to match the room conditions or your preference.




Stop the horizontal flaps at a position where you can hold the tabs and adjust it left and right.

## MAINTENANCE

### ⚠ NOTE

- Do not remove the air filter except when cleaning. This may cause breakage.

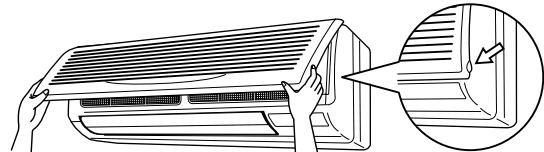
### HOW TO CLEAN THE AIR FILTER

Clean the air filter when the display shows “” (TIME TO CLEAN AIR FILTER).

- Increase the frequency of cleaning if the unit is installed in a room where the air is extremely contaminated.

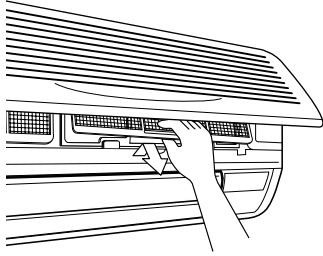
#### 1. Open the front panel.

Place your fingers on the protrusions on the left and right sides of the front panel and open until the panel stops.



## 2. Pull out the air filter.

Push up the tab in the center of the air filter slightly then pull it out downwards.



## 3. Clean the air filter.

Use a vacuum cleaner **A)** or wash the air filter with water **B).**

**A)** Using a vacuum cleaner



**B)** Washing with water

When the air filter is very dirty, use soft brush and neutral detergent



Remove water and dry in the shade.




### NOTE

- Do not wash it with hot water of more than 120°F. Doing so may result in discoloration and/or deformation.
- Do not expose it to fire. Doing so may result in burning.

## 4. Attach the air filter.

Once cleaning is done, be sure to replace the air filter as it was.

## 5. Press the FILTER SIGN RESET button on the remote controller.

The display “” (TIME TO CLEAN AIR FILTER) vanishes.

## HOW TO CLEAN THE AIR OUTLET AND EXTERIOR

- Clean with soft cloth.
- When it is difficult to remove stains, use water or neutral detergent.



### WARNING

- Do not let the indoor unit get wet as it may cause an electric shock or fire.



### NOTE

- Do not use gasoline, benzene, thinner, polishing powder, liquid insecticide. It may cause discoloring or warping.
- Do not use water or air of 120°F or higher for cleaning.

## HOW TO CLEAN THE FRONT PANEL

The front panel can be removed to clean it.

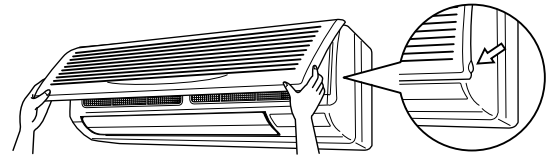


### NOTE

- Hold the front panel firmly so that it does not fall.
- Do not use water over 120°F, benzene, gasoline, thinner, or other volatile substances, polishing powder, or hard scrub brushes to clean the panel.
- Make sure the front panel is solidly in place.

## 1. Open the front panel.

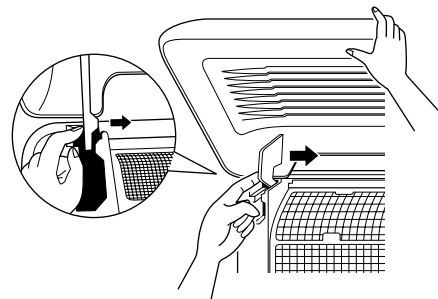
Place your fingers on the protrusions on the left and right sides of the front panel and open until the panel stops.



## 2. Remove the front panel.

Push the axes on either side of the front panel towards the center of the main unit and remove.

(You can also remove it by sliding the front panel either to the left or right and pulling it forward.)



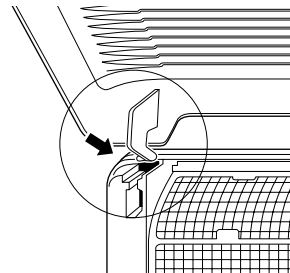
## 3. Clean the front panel.

- Wipe gently with a soft wet cloth.
- Only use neutral cleaning agents.
- After washing off, wipe off any excess water and dry in a shade.

## 4. Attach the front panel.

Set the keys of the front panel into the slots and push them in all the way.

Close the front panel slowly in this state.



**DAIKIN AC (AMERICAS), INC.**

1645 Wallace Drive, Suite 110  
Carrollton, TX 75006

info@daikinac.com  
www.daikinac.com

**DAIKIN INDUSTRIES, LTD.**

Head office:

Umeda Center Bldg., 2-4-12, Nakazaki-Nishi,  
Kita-ku, Osaka, 530-8323 Japan

Tokyo office:

JR Shinagawa East Bldg., 2-18-1, Konan,  
Minato-ku, Tokyo, 108-0075 Japan

